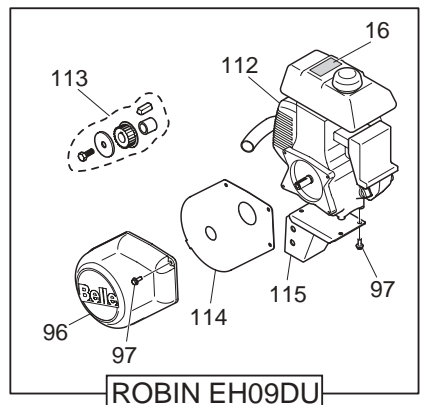
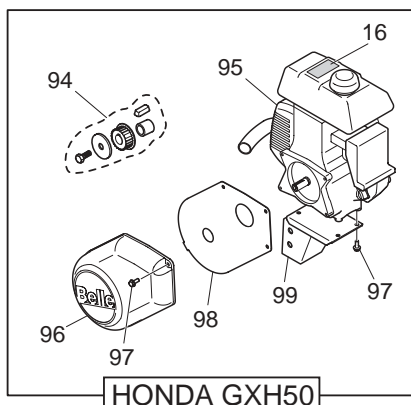
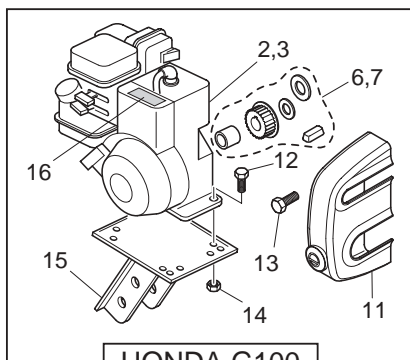
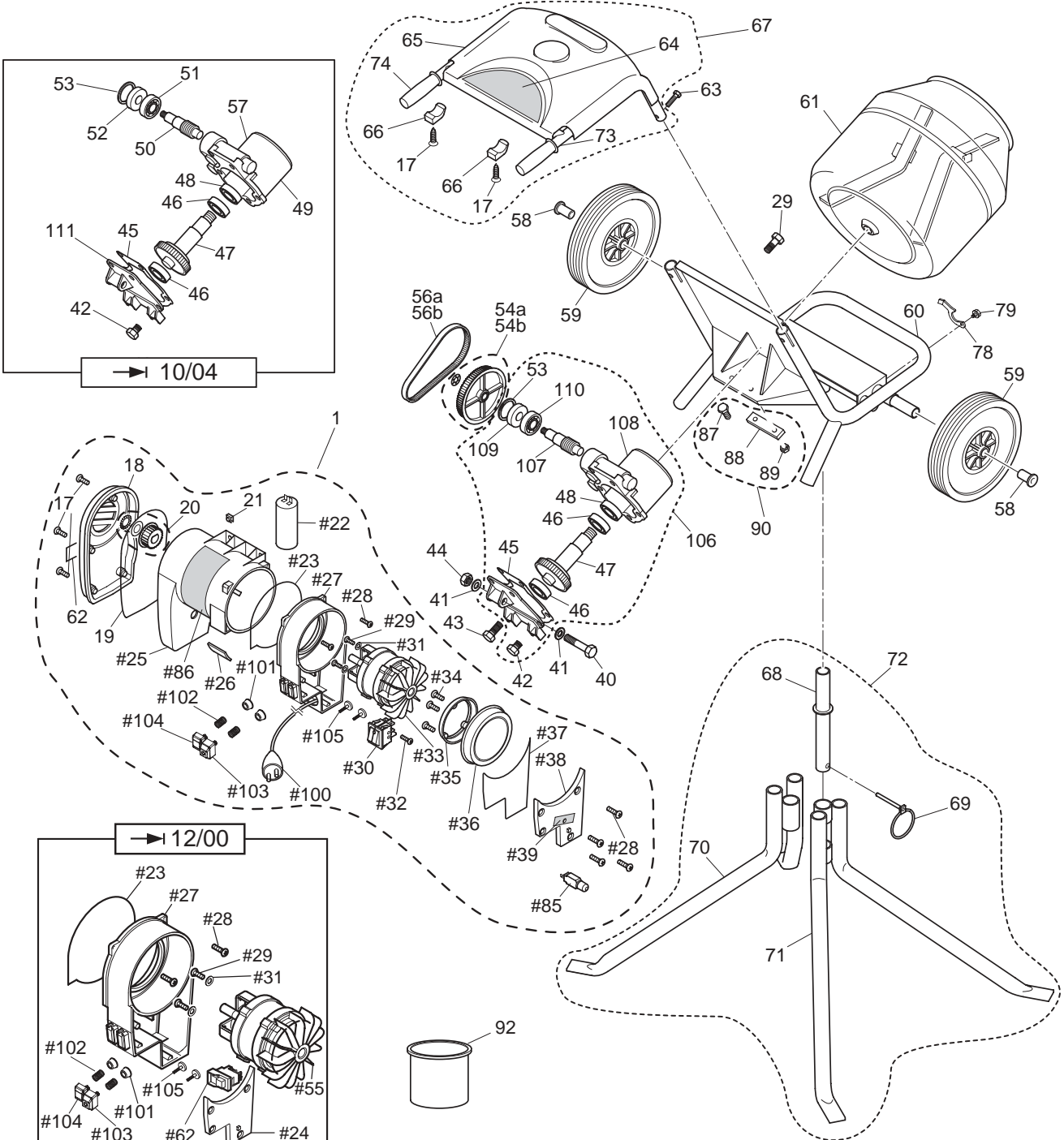




# BELLE GROUP MINIMIX 150 (UL) → 1/01



REPLACEMENT PARTS / PIÈCES DE RECHANGE / REPUESTOS



854/10151/7 04/05 Minimix 150 (UL) Page 1 of 4

540 - 345 - 5090 540 - 345 - 5091 @bellegroupinc@aol.com

BELLE GROUP INC, Electric Road SW, Suite 360, Roanoke VA 24018, USA



# BELLE GROUP MINIMIX 150 (UL) → 1/01



REPLACEMENT PARTS / PIECES DE RECHANGE / REPUESTOS

ITEM NUMBER <sup>(1)</sup>	PART NUMBER <sup>(2)</sup>	DESCRIPTION <sup>(3)</sup>	ITEM NUMBER <sup>(1)</sup>	PART NUMBER <sup>(2)</sup>	DESCRIPTION <sup>(3)</sup>
1	900-32800	MOTOR KIT 115V 60HZ (UL)	56	900-99926	BELT (ELEC / GXH50)
-	900-36300	MOTOR CONVERSION KIT (HONDA)	-	900-99915	BELT(G100 / BRIGGS)
-	900-38200	MOTOR CONVERSION KIT (ROBIN PRE JULY '99)	(→) SERIAL NO. M22B000000		
-	900-38300	MOTOR CONVERSION KIT (ROBIN POST JULY '99)	900-15400		BELT (V - A23)
2	CMS19	ENGINE - BRIGGS 3.5HP IC	(→) SERIAL NO. M22B001629		
3	-	SEE G100 CONVERSION KIT	57	MS08	GEARCASE
4	-	-	58	900-11400	WHEEL RETAINER
5	-	-	59	60-0286	WHEEL
6	900-31000	ENGINE PULLEY KIT (BRIGGS)	60	900-24800	MAINFRAME WA
7	900-32600	ENGINE PULLEY KIT (HONDA G100)	61	CMS12	DRUM WA
8	-	-	62	900/99924	SWITCH NVR 115V - 60HZ
9	-	-	(→) SERIAL NO. M22B001629		
10	-	-	63	9-8012	BOLT (M8 SPECIAL)
11	900-99927	BELT GUARD	64	800-21302	DECAL TOP COVER
12	9-8003	BOLT (M8 X 35)	65	900-99914	TOP COVER (MINIMIX)
13	7-10002	SCREW (10 X 3/8")	66	900-99918	TOP COVER CLAMP
14	8-8001	NUT (M8)	67	900-31900	TOP COVER ASSEMBLY (UL)
15A	900-33200	ENGINE DECK (HONDA G100)	68	900-26600	STAND ADAPTOR WA
15B	900-33300	ENGINE DECK (BRIGGS)	69	3-1007	LINCH PIN
16	800-21322	DECAL HOT PARTS	70	900-17100	STAND LEG R/H WA (1 BOSS)
17	7-5017	SCREW (5.5 X 25 PLASFAST)	71	900-17000	STAND LEG L/H WA (2 BOSS)
18	900-27403	BELT GUARD (UL)	72	900-14300	STAND ASSEMBLY (→) JUNE '99)
19	900-99907	BELT GUARD SEAL	73	900-26500	STAND ASSEMBLY (→) JULY '99)
20	900-29900	MOTOR PULLEY KIT	73A	900-25000	HANDLE WA (HONDA & BRIGGS)
21	8-8007	NUT (M8 LUG)	74	900-37800	HANDLE WA (ROBIN EH09DU)
22	70-0150	CAPACITOR	74	XS35	HANDLE GRIP
23	900-99908	SWITCH HOUSING SEAL	78	900-99911	STAND CLIP
24	900-27404	CAP SWITCH COVER (UL)	79	7-8045	TAPTITE (M8 X 12 FLANGED)
25	900-27401	MOTOR HOUSING (UL)	85	70-0186	THERMAL OVERLOAD SWITCH
26	900-27405	CABLE COVER INSERT (UL)	86	800-21270	DECAL MOTOR RATING (115V 60HZ)
27	900-32900	SWITCH ASSY (115V 60HZ)	87	9-10005	BOLT (M10 X 45)
28	7-5016	SCREW (5.5 X 16 PLASFAST)	88	900-99931	PLATE GEARBOX SUPPORT (→) 4/02)
29	7-8037	SET SCREW (M8 X 20 FLANGED)	89	8-10009	NUT (M10)
30	70-0182	ON/OFF SWITCH (UL)	90	900-32300	KIT GEARBOX SUPPORT PLATE (→) 4/02)
31	4-8008	WASHER (5/16" X 1")	92	1-0519	PAINT - 1 LITRE TIN (ORANGE)
32	7-0009	SCREW (3.5 X 9.5 SELF-TAP)	94	900-36400	ENGINE PULLEY KIT (HONDA GXH50)
33	900-33100	MOTOR (115V 60HZ)	95	20-0031	ENGINE (HONDA GXH50)
34	7-0008	SCREW (3.9 X 19 SELF-TAP)	96	900-99935	BELT GUARD (HONDA GXH50 & ROBIN)
35	901-99941	INNER COVER SHIELD (UL)	97	7-6034	BOLT (M6 X 16)
36	901-99942	OUTER COVER SHIELD (UL)	98	900-99934	PLATE BELT GUARD (HONDA GXH50)
37	900-99909	SWITCH COVER SEAL	99	900-35300	ENGINE DECK (HONDA GXH50)
38	900-27406	SWITCH COVER	100	900-29600	CABLE ASSY (US PLUG)
39	800-99902	DECAL THERMAL OVERLOAD SWITCH	101	70-0161	SWITCH RUBBER INSERT
40	9-12005	BOLT (M12 X 70)	102	70-0160	BUTTON SPRING
41	4-1205	WASHER (M12)	103	70-0157	BUTTON OFF (RED)
42	MS12	FILLER BUNG	104	70-0156	BUTTON ON (GREEN)
43	7-8003	SET SCREW (M8 X 25 SQ FLOW)	105	70-0167	SWITCH INSERT
44	8-12002	NUT (M12)	106	900-37600	GEARBOX ASSEMBLY (→) 10/04)
45	MS11	GEARBOX GASKET	107	900-37601	WORMSHAFT (→) 10/04)
46	CMS10	BEARING (6006)	108	900-37602	GEARBOX CASE (→) 10/04)
47	MS09	DRUM SHAFT	109	5-0052	OIL SEAL (→) 10/04)
48	CMS11	OILSEAL (B407)	110	53-0032	BEARING (→) 10/04)
49	👁 106	GEARBOX ASSEMBLY (→) MX22141526)	111	MS10	GEARBOX BACKPLATE (→) 10/04)
	MS25	GEARBOX ASSEMBLY (→) M22B001629)	112	20-0060	ENGINE - ROBIN EH09DU
50	900-24701	WORMSHAFT (→) MX22141526)	113	900-38400	ENGINE PULLEY KIT - ROBIN
	MS21	WORMSHAFT (→) M22B001629)	114	900-37900	PLATE BELT GUARD - ROBIN
51	PS013	BEARING (6004)	115	900-38000	ENGINE DECK - ROBIN
52	CMS41	OILSEAL			
53	MS22	CIRCLIP			
54	900-31600	G/BOX PULLEY KIT (ELEC / GXH50)			
	900-30000	G/BOX PULLEY KIT (G100 / BRIGGS)			
	CMS39	ASSEMBLY MINI PULLEY (→) SERIAL NO. M22B001629)			
55	900/26900	MOTOR (115V 60HZ)			
		(→) SERIAL NO. M22B000000)			
		(→) SERIAL NO. M22B001629)			

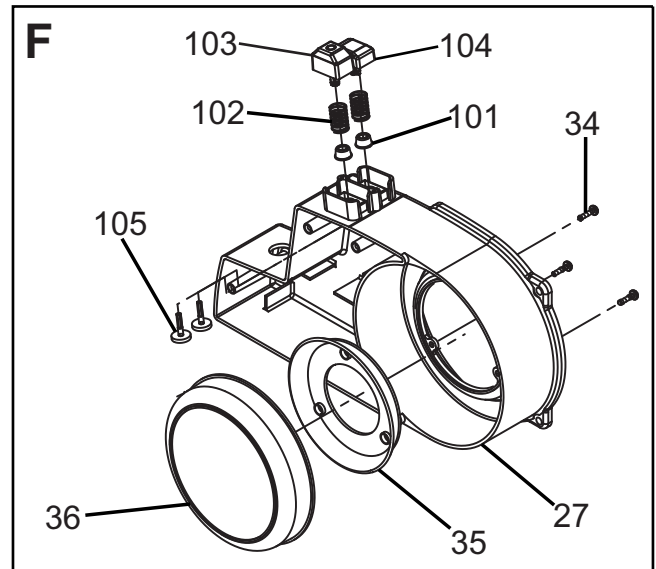
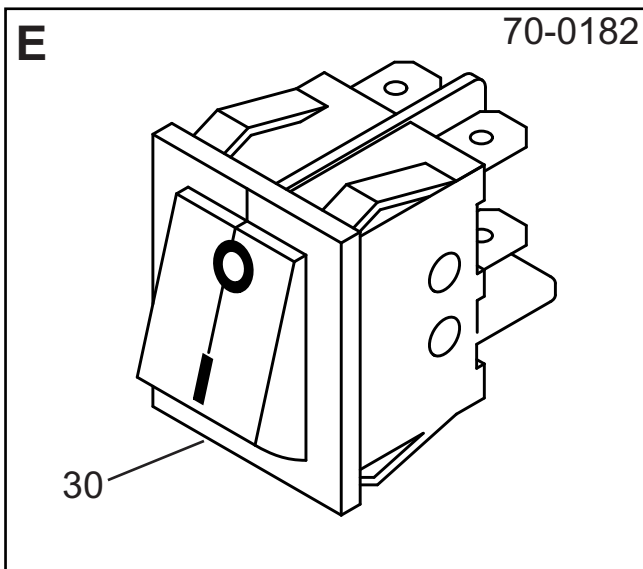
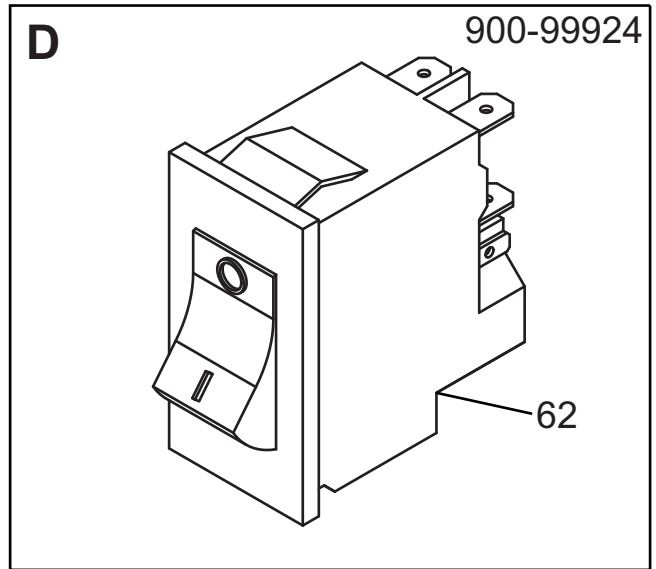
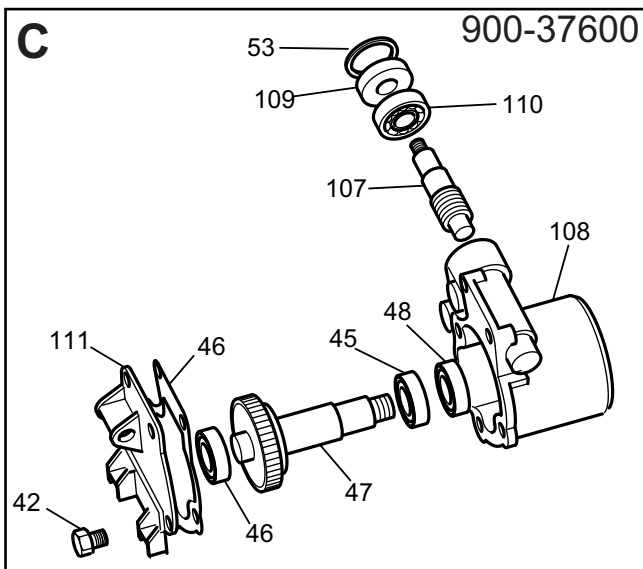
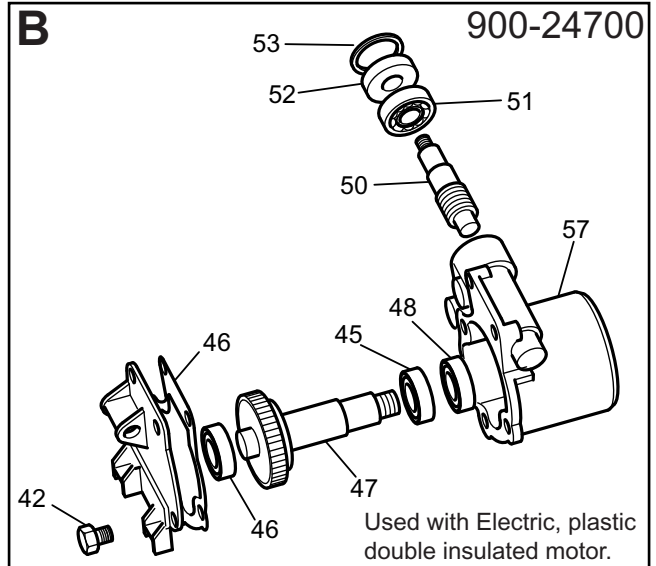
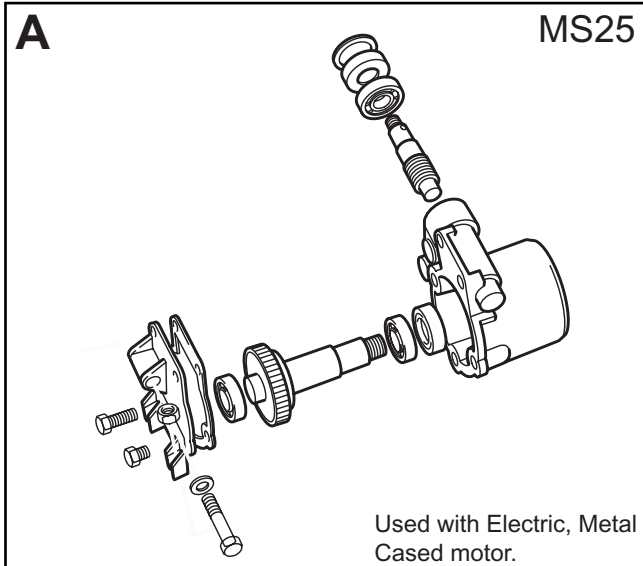
Belle Group reserves the right to alter details and specification without notice

**⚠ CAUTION:** PARTS WITH A # SHOULD ONLY BE FITTED BY A QUALIFIED ELECTRICIAN.

**⚠ PRECAUCION:** LAS PARTES MARCADAS CON # SOLO DEBEN INSTALARSE POR UN ELECTRICISTA CAPACITADO.

**⚠ ATTENTION:** LES PIECES MARQUEES # DOIVENT ETRE MONTEES PAR UN ELECTRICIEN QUALIFIE.

1) ITEM NUMBER: NUMERO DE L'ARTICLE / NÚMERO DE ELEMENTO  
 2) PART NUMBER: NUMERO DE LA PIECE / NÚMERO DE PIEZA  
 3) DESCRIPTION: DÉSIGNATION / DESCRIPCIÓN



854/1015/17 04/05 MINIMIX 150 UL UPDATES 3 of 4

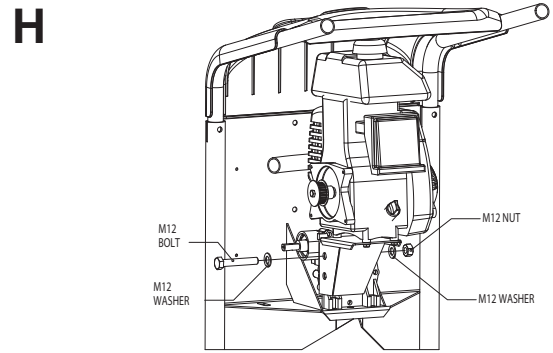
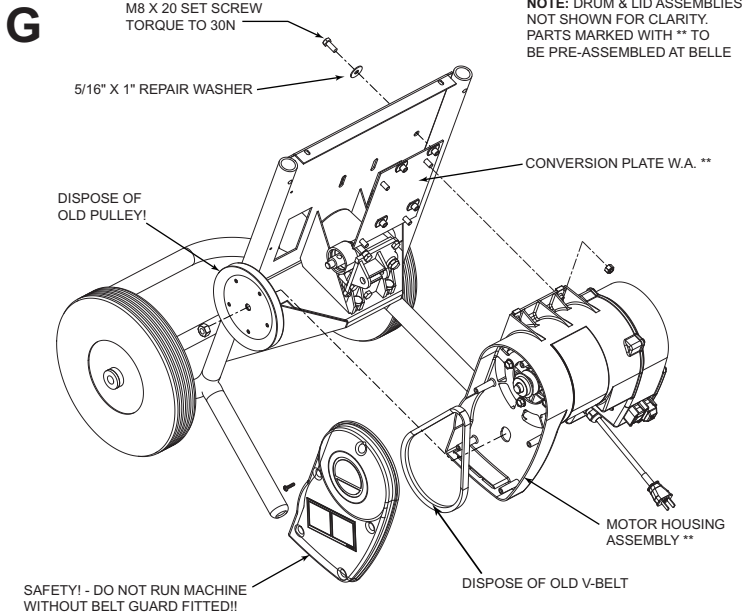


FIG 1. FITTING ENGINE DECK BOLT  
M12 BOLT TO BE TORQUED UP TO 90Nm

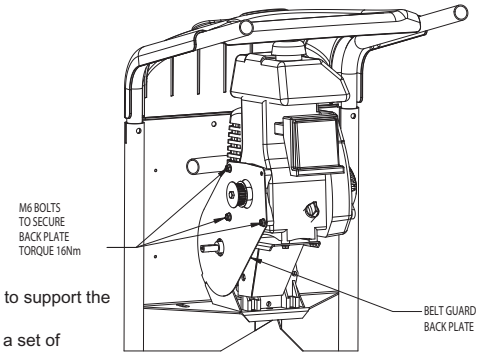


FIG 2. FITTING BELT GUARD BACK PLATE

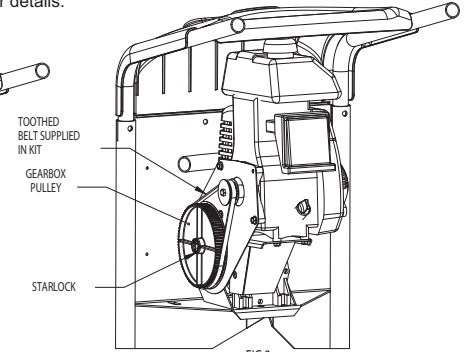


FIG 3. FITTING GEARBOX BOTTOM PULLEY AND SECURING WITH STARLOCK WASHER.

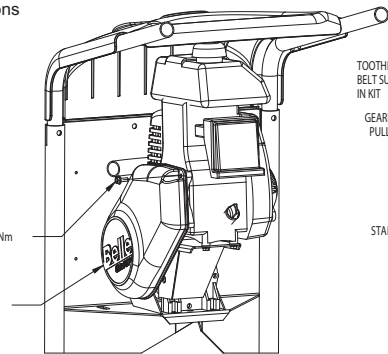


FIG 4. FITTING BELT GUARD AND SECURING WITH M6 BOLT

1. Remove belt guard from the mixer by removing the two M6 bolts which are fitted through the frame.
2. Remove toothed belt by easing it off the bottom pulley.
3. Loosen and remove the M12 bolt which passes through the back of the engine deck and gearbox, taking care to support the engine so that it doesn't fall.
4. Remove starlock washer from gearbox shaft, then remove the large gearbox pulley, this can be assisted using a set of mechanical leg pullers.
5. Using kit 900/36300, fit the new power unit. Offer the engine and deck up to the back of the gearbox which is on your mixer. Using the top hole of the engine deck, secure the engine deck with the M12 bolt removed previously. See fig.1 for details.
6. Re-torque the M12 bolt to 90Nm, checking that the gearbox input shaft and the engine drive shaft are parallel.
7. Using the belt guard back plate provided, fit 3 of the 4 bolts in positions shown in fig.2 and torque to 16Nm.
8. Fit the new gearbox pulley to the input drive of the gearbox and secure using the new starlock washer provided. See fig.3.
9. Fit new belt provided by turning engine over slowly with the recoil. Fitting the belt to the bottom pulley.
10. Check that the belt runs inline and then fit the belt guard by locating the tab in the guard and then clipping the guard to the back plate. Secure with the M6 bolt provided and torque to 16Nm. See fig.4 for details.
11. Using the oil provided, fill the engine up to the full position ensuring that the engine deck is in a level position before doing so.
12. Fit the new decals supplied to the frame in a clear and well visible position.
13. After checking the oil level fill the engine with petrol and start using normal procedure.
14. Resume normal use of mixer.

REF	PART NO.	DESCRIPTION	WHEN USED	STATUS
A	MS25	Gearbox Assembly	Up To Jan '00	Spares Only
B	900-24700	Gearbox Assembly	Up To Oct '04	Obsolete
C	900-37600	Gearbox Assembly	From Oct '04	Current Production
D	900-99924	Switch NVR 115V-60Hz	Up To Jan '00	Spares Only
E	70-0182	On/Off Switch (UL)	From Jan '00	Current Production
F	-	Switch Housing Diagram	-	Current Production
G	900-32500	Metal Cased Electric Motor Conversion Kit	May '01	Current Production
H	900-36300	G100 to GXH50 (Honda) Conversion Kit	July '99	Current Production
-	900-35200	EY08 to EH09DU - Robin Conversion Kit (Pre July '99)	March '05	Current Production
-	900-38200	EY08 to EH09DU - Robin Conv'n Kit (July '99 Onwards)	March '05	Current Production