

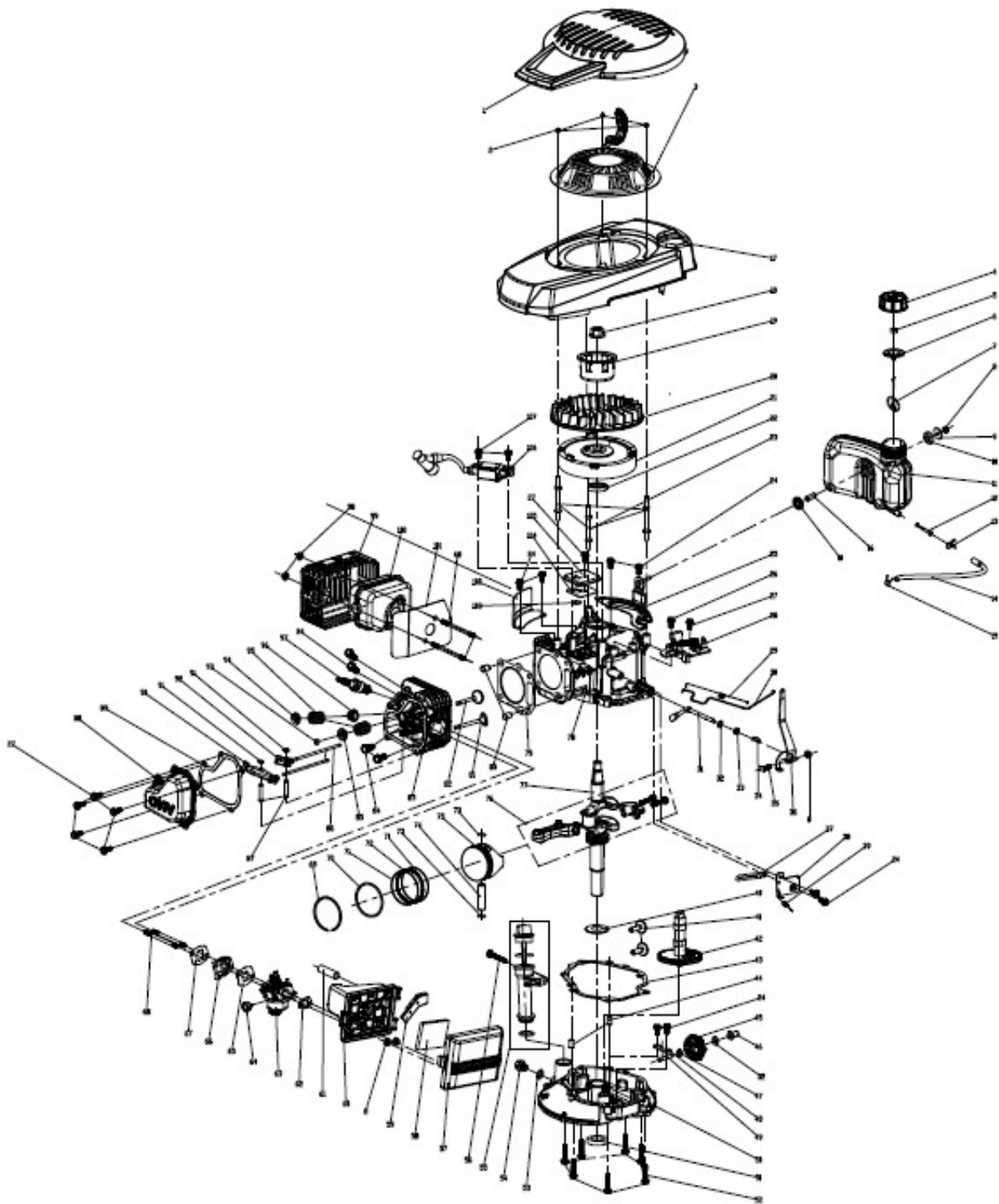
				定速刹车+蝶形旋钮 +E型扶手+塑料草箱			宁波市德霖机械有限公司	
				T400I				
标记	次数	更改文件号	签字	日期	图样标记	重量	比例	
设计			标准化				1:2	
审核								
工艺			日期		共 页		第 页	

## Parts list

(T400I)

No.	Matrial No.	English Description	Qty
1	60100100000	blade bolt	1
2	70040070000	blade washer	1
3	70130180000	blade	1
4	70140740000	Blade Adapter Assy	1
5	20850010450	deck	1
6	20130010000	front protection board	1
7	60170190000	Cross recessed Pan head tapping screws	3
8	70870040000	rear wheel height adjust handle assy	1
9	60180110000	Resilient washer	4
10	20880010460	wheel assy.	2
11	60190150000	flat washer	4
12	60150010000	Hex lock nut	2
13	20620010460	outer cover of hub	4
14	60300060000	R type pin	2
15	20880033460	wheel assy	2
16	60190080000	Small washer	2
17	70870060000	rear wheel height adjust handle assy	1
18	70870030000	rear wheel height adjust handle assy	1
19	70870050000	rear wheel height adjust handle assy	1
20	20010010460	sheath of height adjustment handle	4
21	20160050000	mulching plug	1
22	70030020000	Shaft for rear discharge cover	1
23	60380030000	cover spring	1
24	20380030000	rear discharge cover	1
25	60170180000	Cross recessed Pan head tapping screws	6
26	20100010460	bottom of grass box	1
27	60170330000	Cross recessed small Pan head screws	2
28	60130010000	Cap nut	2
29	20080010000	top of grass box	1
30	20090010000	protection board of grass bag	1
31	20340060130	foam pipe	1
32	60060590000	Bolt	2
33	20030030000	lever guard	1
34	60150080000	Self-locking nut	2
35	70500550130	upper handrail	1
36	70230090000	Rope Guide	1
37	60130020000	Cap nut	1
38	20350010000	handrail stopper	2
39	60040130000	Half round head square neck bolts	2
40	60200470000	flat Gasket	2
41	20040030000	thick knob	2
42	70520150130	lower handrail	1
43	60170380000	Cross recessed Pan head tapping screws	2
44	60140080000	Hexagon nut	2
45	70520130130	lower handrail	1
46	20240020000	fastener	1
47	70810210000	brake cable	1
48	70050120000	Brake Cable Assy plate	1
49	70540083130	stop lever	1
50	T852450	petrol engine	1
51	70150160000	Chassis bushing	3
52	60060190000	Hex flange bolts	3

T6汽油机分解图



宁波中德机械有限公司										
T6汽油机分解图										
图号	比例	日期	设计	审核	制图	校对	数量	材料	备注	
							1	54		
共 1 页 第 1 页							图号: 42			

## T6 Engine

No.	Material No.	English Description	Qty
1	25190160000	The transparent cover	1
2	60130020000	Cap nut	3
3	75430110000	pull starter assy.	1
4	25170110000	fuel tank cap	1
5	80010070000	fuel tank cap sponge	1
6	60440340000	Fuel Tank Cap seal gasket	1
7	25250010000	connect cable of fuel cap	1
8	60140020000	Hex flange nuts	4
9	60190310000	The oil tank mount big washer	1
10	25310030000	Tank damping rubber pad	2
11	25180230000	fuel tank body	1
12	25150010000	Filtering Net Duct of Fuel	1
13	60230020000	fuel pipe lock clamp I	1
14	25160010000	fuel pipe	1
15	60230010000	fuel pipe lock clamp II	1
16	60240250000	Fuel tank mounting bushing	1
17	25190250000	The transparent cover	1
18	60140050000	Hex flange nuts	1
19	75210010000	starter hub	1
20	25040110000	fan	1
21	75390240000	flywheel assy	1
22	60360090000	oil seal	1
23	60080230000	Dual-head bolts	3
24	60060520000	Bolt	8
25	75330070000	main bracket of fuel tank	1
26	60060550000	Bolt	1
27	60060530000	Bolt	7
28	75380900000	detent assy.	1
29	60410770000	valve spring	1
30	75160060000	Handspike of Valve	1
31	75290010000	rate-limiting rocker arm shaft	1
32	60200490000	Gasket	2
33	60360080000	oil seal	1
34	60300040000	R type pin	1
35	60060730000	bolt	1
36	75070040000	throttle rocker arm	1
37	60450010000	clip	1
38	75360010000	single phrase throttle assy.	1
39	60410470000	throttle control spring	1
40	60200180000	clockwise gear gasket	1
41	75250010000	pin	2

42	75470100000	camshaft assy.	1
43	75720240000	Respirator head gasket	1
44	60280030000	spacing pin	2
45	75520020000	rete-limiting gear assy.	1
46	25070010000	Sliding Sleeve	1
47	60200060000	Gasket	1
48	75280020000	rate-limiting gear shaft clamp	1
49	75270030000	rate-limiting gear shaft	1
50	75240120000	Crank box cover	1
51	60360100000	oil seal	1
52	60060590000	Bolt	7
53	60200150000	Oil drain bolt gasket	1
54	60061020000	Oil drain bolt	1
55	25200130050	Lubricating Gauge Assy	1
56	60060630000	Bolt	1
57	25120060000	Air Filter Cover	1
58	25300120000	Foam filter	1
59	25020050000	Vent groove cover plate	1
60	25110100000	An air filter base.	1
61	25030070000	waste pipe	1
62	75730100000	Air filter paper pad	1
63	75410620000	CARBURETOR	1
64	25210020050	prime button II	1
65	75730030000	Carburetor paper pad II	1
66	25090010000	Air Inlet Pipe	1
67	75730020000	Carburetor paper pad I	1
68	60080030000	Dual-head bolts	4
69	75130130000	Piston Ring I	1
70	75130140000	Piston Ring II	1
71	75090060000	Guide Rail	2
72	75000070000	Bushing Ring	1
73	60310010000	piston pin	1
74	60400020000	Piston Pin circlip	2
75	75120090000	Piston	1
76	75460070000	connecting rod assy.	1
77	75510770000	crankshaft assy.	1
78	75500160000	crankshaft box assy.	1
79	75720100000	Cylinder head gasket	1
80	60280020000	spacing pin	2
81	75190040000	Exhaust Valve	1
82	75170040000	IntakeValve	1
83	75490090000	cyclinder head assy.	1
84	60050030000	locking bolt	4

85	75180020000	Spring Coil of Exhaust Valve	1
86	75350030000	push rod	2
87	75290050000	Valve rocker shaft	2
88	75080040000	cylinder head cover	1
89	75720300000	Cylinder head gasket	1
90	75230031000	Exhaust valve rocker combination	1
91	60240240000	washer	2
92	75230030000	Air intake door rocker combination	1
93	75200010000	Top Cover of Exhaust Valve	1
94	75180010000	Spring Coil of Intake Valve	1
95	60380090000	valve spring	2
96	60360130000	oil seal assy	1
97	75140010000	spark plug	1
98	60150100000	Self-locking nut	2
99	75530030000	muffler cover assy.	1
100	75540150000	muffler assy.	1
101	75740020000	Muffler insulating pad	1
102	75030110000	wind shield	1
103	75100030000	Respirator valve plate	1
104	75720310000	Respirator head gasket	1
105	75400030000	Valve rocker shaft	1
106	75370070000	ignition assy.	1
107	60060580000	Bolt	2