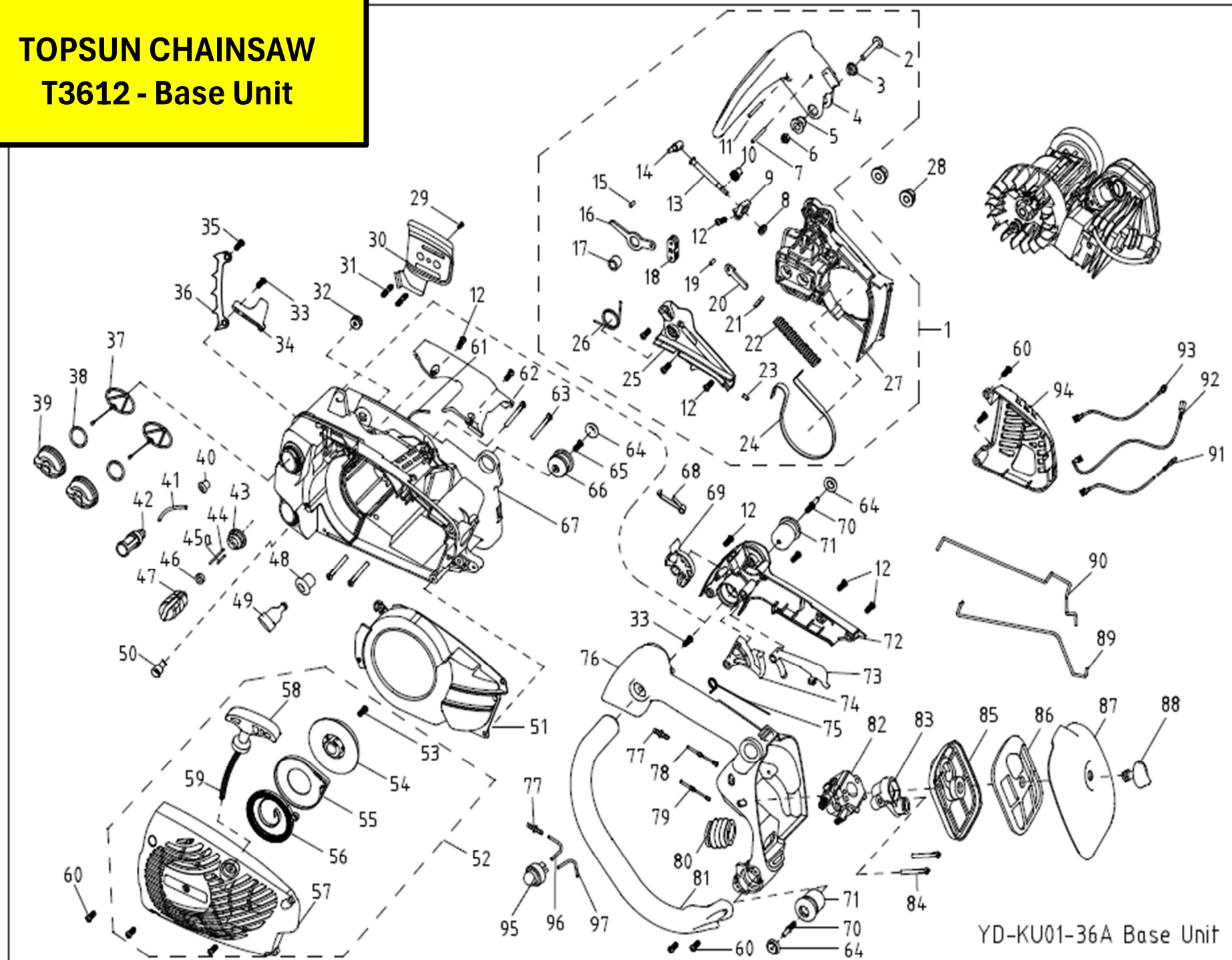


TOPSUN CHAINSAW T3612 - Base Unit



BASE UNIT OF T3612			
No.	Parts No.	Description(EN)	QTY
1	YD36.04.00-00	clutch cover assembly	1
2	YD36.04.00-13	screw M5×32	1
3	YD36.04.00-11	screw bush	1
4	YD36.04.00-2	front-hand guard	1
5	YD36.04.00-12	nut bush	1
6	GB/T6185.1	lock-nut M5	1
7	GB/T119.2	pin 3×26	1
8	YD36.04.00-17	passively conical gear	1
9	YD36.04.00-18	conical gear base	1
10	YD36.04.00-16	active conical gear	1
11	GB/T119.2	pin 3×29	1
12	GB/T845	tapping screw ST4.2×12	10
13	YD36.04.00-15	tightened screw	1
14	YD36.04.00-14	tension block	1
15	GB/T119.2	pin 3×14.7	1
16	YD36.04.00-8	brake sway rod	1
17	YD36.04.00-10	sway rod bush	1
18	YD36.04.00-7	main level	1
19	GB/T119.2	pin 3×7.8	1
20	YD36.04.00-6	brake control rod	1
21	YD36.04.00-5	spring base	1
22	YD36.04.00-4	brake spring	1
23	GB/T119.2	pin 3×9.7	1
24	YD36.04.00-3	brake strap	1
25	YD36.04.00-1	brake spring cover plate	1
26	YD36.04.00-9	returned torsion rod spring	1

BASE UNIT OF T3612			
No.	Parts No.	Description(EN)	QTY
27	YD36.04.01-00	clutch cover	1
28	GB/T6177.1	nut M6	2
29	GB/T845	tapping screw ST4.2×9.5	1
30	YD36.00.00-17	cover plate	1
31	YD36.03.00-13	double-head screw	2
32	YD36.03.00-5	stop top	1
33	GB/T845	tapping screw ST4.8×19	2
34	YD36.00.00-15	chain catcher	1
35	GB/T845	tapping screw ST4.8×13	1
36	YD36.00.00-16	bumper spikes	1
37	YD36.03.02-2	fuel cover retainer	2
38	YD36.03.02-3	"o" ring	2
39	YD36.03.02-1	fuel cover	2
40	YD36.03.00-7	oil tube root	1
41	YD36.03.00-6	oil tube 2.5×6×160	1
42	YD36.03.04-00	oil filter components	1
43	YD36.03.00-4	fuel tube root	1
44	YD36.03.00-1	fuel tube 2.5×5×262	1
45a	YD36.03.00-15	return fuel tube B	1
46	YD36.03.00-3	tube circlip	2
47	YD36.03.03-00	petrol filter components	1
48	YD36.03.00-11	balancer root	1
49		balancer	1
50	YD36.03.00-12	aeration jet	1
51	YD36.02.00-1	bossing	1
52	YD36.02.00-00	starter assembly	1

BASE UNIT OF T3612			
No.	Parts No.	Description(EN)	QTY
53	GB/T9074.19	tapping screw ST4.8×13	1
54	YD36.02.01-1	start plate	1
55	YD36.02.01-2	coil-spring gland	1
56	YD36.02.01-4	start coil-spring	1
57	YD36.02.02-00	starter cover	1
58	YD36.02.01-3	start handle	1
59	YD36.02.01-5	stretching wire 2.5×870	1
60	GB/T845	tapping screw ST4.2×16	8
61	YD36.03.00-14	oil tube 2.5×6×90	1
62	YD36.00.00-2	conductor cover plate	1
63	GB/T16674	screw M6×20	4
64	YD36.00.00-14	dust cover	3
65	YD36.00.00-12	handle screw	1
66	YD36.03.05-00	cushion socker φ 22.5×20	1
67	YD36.03.01-00	base components	1
68	YD36.01.11.00-1	ground scrip	1
69	YD36.00.00-9	choke trigger	1
70	YD36.00.00-21	front handle screw	2
71	YD36.00.02-00	cushion socker φ 22.5×30	2
72	YD36.00.00-5	rear handle cover	1
73	YD36.00.00-7	trigger control rack	1
74	YD36.00.00-6	trigger	1
75	YD36.00.00-8	trigger torsion rod spring	1
76	YD36.00.01-00	rear handle	1
77	YD36.03.00-2	oil ingoing tube connector	2
78	YD36.00.00-18	fuel outgoing tube	1

BASE UNIT OF T3612			
No.	Parts No.	Description(EN)	QTY
79	YD36.00.00-19	suction tube	1
80	YD36.00.00-4	air lead tube	1
81	YD36.00.00-1	front handle	1
82	YD36.01.06.00-00	carburetor	1
83	YD36.01.00-2	air intake socket	1
84	GB/T9074.4	screw M5×50	2
85	YD36.01.08.02-00	air filter nether cover	1
86	YD36.01.08.01-00	air filter upper cover	1
87	YD36.05.00-1	air filter cover	1
88	YD36.05.00-2	air filter cover screw	1
89	YD36.00.00-10	trigger rod	1
90	YD36.00.00-11	choke rod	1
91	YD36.01.11.02-00	extinction conductor 0.5×140	1
92	YD36.01.11.03-00	extinction conductor 0.5×235	1
93	YD36.01.11.04-00	ground wire 0.5×200	1
94	YD36.00.00-3	muffler cover	1
95	YD38-3	primer bulb	1
96	YD36.00.00-20	return fuel tube A	1
97	YD36.00.00-21	primer tube	1